



# राष्ट्रीय मूल्यांकन एवं प्रत्यायन परिषद

विश्वविद्यालय अनुदान आयोग का स्वायत्त संस्थान

**NATIONAL ASSESSMENT AND ACCREDITATION COUNCIL**

An Autonomous Institution of the University Grants Commission

डॉ. वहीदुल हसन

वरिष्ठ संचार एवं प्रकाशन अधिकारी

**Dr. Wahidul Hasan**

**Senior Communication cum Publication Officer**

NAAC/WH/Cert-A&A/EC(37<sup>th</sup>SC)/MHCOGN101953/2019/

24<sup>th</sup> May 2019

The Principal

Konkan Gyanpeeth

College of Engineering

Konkan Gyanpeeth,

Shaikhanik Sankul,

Vengaon Road,

Dahivali, Tal. Karjat,

Dist. Raigad - 410 201

Maharashtra

Dear Sir/Madam,

Greetings from NAAC.

As directed by the Director, NAAC, I am herewith enclosing the Certificate of Accreditation of your Institution. We wish the Institution all success in its efforts to become a lead Quality Institution of Higher Learning.

Kindly acknowledge the receipt of the certificate.

With warm regards,

Yours sincerely,

(Wahidul Hasan)

Encl.: a/a





## राष्ट्रीय मूल्यांकन एवं प्रत्यायन परिषद

विश्वविद्यालय अनुदान आयोग का स्वायत्त संस्थान

**NATIONAL ASSESSMENT AND ACCREDITATION COUNCIL**

An Autonomous Institution of the University Grants Commission

# Quality Profile

Name of the Institution : Konkan Gyanpeeth College of Engineering

Place : Dahivali, Tal. Karjat, Dist. Raigad, Maharashtra

Criteria	Weightage ( $W_i$ )	Criterion-wise Weighted Grade Point (Cr WGP <sub>i</sub> )	Criterion-wise Grade Point Averages (Cr WGP <sub>i</sub> / $W_i$ )
I. Curricular Aspects	095	330	3.47
II. Teaching-Learning and Evaluation	340	882	2.59
III. Research, Innovations and Extension	110	337	3.06
IV. Infrastructure and Learning Resources	100	333	3.33
V. Student Support and Progression	113	265	2.35
VI. Governance, Leadership & Management	094	195	2.07
VII. Institutional Values and Best Practices	100	227	2.27
<b>Total</b>	$\sum_{i=1}^7 W_i = 952$	$\sum_{i=1}^7 (Cr WGP_i) = 2569$	

$$\text{Institutional CGPA} = \frac{\sum_{i=1}^7 (Cr WGP_i)}{\sum_{i=1}^7 W_i} = \frac{2569}{952} = \boxed{2.70}$$

Grade =  $\boxed{B^+}$

Date : March 28, 2019



S.C. Chavane  
Director

- This certification is valid for a period of Five years with effect from March 28, 2019
- An institutional CGPA on seven point scale in the range of 3.51 - 4.00 denotes A<sup>++</sup> grade, 3.26 - 3.50 denotes A<sup>+</sup> grade, 3.01 - 3.25 denotes A grade, 2.76 - 3.00 denotes B<sup>++</sup> grade, 2.51 - 2.75 denotes B<sup>+</sup> grade, 2.01 - 2.50 denotes B grade, 1.51 - 2.00 denotes C grade
- Scores rounded off to the nearest integer





# राष्ट्रीय मूल्यांकन एवं प्रत्यायन परिषद

विश्वविद्यालय अनुदान आयोग का स्वायत्त संस्थान

## NATIONAL ASSESSMENT AND ACCREDITATION COUNCIL

An Autonomous Institution of the University Grants Commission

P. O. Box No. 1075, Nagarbhavi, Bengaluru - 560 072

पो.ओ. बॉक्स नं. 1075, नागरभावी, बेंगलूरु - 560 072

### Notice

#### **Sub: Mandatory Submission of Annual Quality Assurance Report (AQAR) by Internal Quality Assurance Cell (IQAC) of HEIs**

NAAC advocates that every accredited institution need to establish an Internal Quality Assurance Cell (IQAC) as a quality sustenance measure. NAAC intends IQACs to be more developmental oriented focusing on continuous improvement. NAAC has prepared Guidelines for Creation of the Internal Quality Assurance Cell (IQAC) and Submission of Annual Quality Assurance Report (AQAR) for Accredited Institutions.

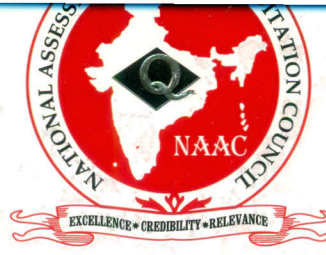
So far submission of AQARs was not a mandatory requirement for institutions applying to NAAC 2<sup>nd</sup> and subsequent cycles of Assessment and Accreditation (A&A). It has now been decided by the Executive committee of NAAC that **regular submission of AQARs should be made mandatory for 2<sup>nd</sup> and subsequent cycles of accreditation.**

In view of the decision of **Executive Committee of NAAC** the following will be the pre-requisites for submission of LOI for all Higher Education Institutions (HEIs) opting for 2<sup>nd</sup> and subsequent cycles of A&A **with effect from 16<sup>th</sup> September 2016:**

- ➔ Having a functional IQAC.
- ➔ The minutes of IQAC meeting and compliance to the decisions should be uploaded on the institutional website.
- ➔ Mandatory submission of AQARs on a regular basis for institutions undergoing the second and subsequent cycles of Assessment and Accreditation by NAAC.
- ➔ Upload the AQAR's on institutional website for access to all stakeholders.

Place : Bengaluru  
Date : 1<sup>st</sup> August 2018

Prof. S. C. Sharma  
Director



## राष्ट्रीय मूल्यांकन एवं प्रत्यायन परिषद

विश्वविद्यालय अनुदान आयोग का स्वायत्त संस्थान

**NATIONAL ASSESSMENT AND ACCREDITATION COUNCIL**

*An Autonomous Institution of the University Grants Commission*

# Certificate of Accreditation

*The Executive Committee of the  
National Assessment and Accreditation Council  
on the recommendation of the duly appointed  
Peer Team is pleased to declare the  
Konkan Gyanpeeth College of Engineering  
Dahivali, Tal. Karjat, Dist. Raigad, affiliated to University of Mumbai,  
Maharashtra as  
Accredited  
with CGPA of 2.70 on seven point scale  
at B<sup>+</sup> grade  
valid up to March 27, 2024*

*Date : March 28, 2019*



*S. C. Anand*  
Director





# राष्ट्रीय मूल्यांकन एवं प्रत्यायन परिषद

विश्वविद्यालय अनुदान आयोग का स्वायत्त संस्थान

## NATIONAL ASSESSMENT AND ACCREDITATION COUNCIL

An Autonomous Institution of the University Grants Commission

P. O. Box No. 1075, Nagarbhavi, Bengaluru - 560 072

पो.ओ. बॉक्स नं. 1075, नागरभावी, बेंगलूरु - 560 072

### Notice

#### **Sub: Mandatory Submission of Annual Quality Assurance Report (AQAR) by Internal Quality Assurance Cell (IQAC) of HEIs**

NAAC advocates that every accredited institution need to establish an Internal Quality Assurance Cell (IQAC) as a quality sustenance measure. NAAC intends IQACs to be more developmental oriented focusing on continuous improvement. NAAC has prepared Guidelines for Creation of the Internal Quality Assurance Cell (IQAC) and Submission of Annual Quality Assurance Report (AQAR) for Accredited Institutions.

So far submission of AQARs was not a mandatory requirement for institutions applying to NAAC 2<sup>nd</sup> and subsequent cycles of Assessment and Accreditation (A&A). It has now been decided by the Executive committee of NAAC that **regular submission of AQARs should be made mandatory for 2<sup>nd</sup> and subsequent cycles of accreditation.**

In view of the decision of **Executive Committee of NAAC** the following will be the pre-requisites for submission of LOI for all Higher Education Institutions (HEIs) opting for 2<sup>nd</sup> and subsequent cycles of A&A **with effect from 16<sup>th</sup> September 2016:**

- ➔ Having a functional IQAC.
- ➔ The minutes of IQAC meeting and compliance to the decisions should be uploaded on the institutional website.
- ➔ Mandatory submission of AQARs on a regular basis for institutions undergoing the second and subsequent cycles of Assessment and Accreditation by NAAC.
- ➔ Upload the AQAR's on institutional website for access to all stakeholders.

Place : Bengaluru

Date : 1<sup>st</sup> August 2018

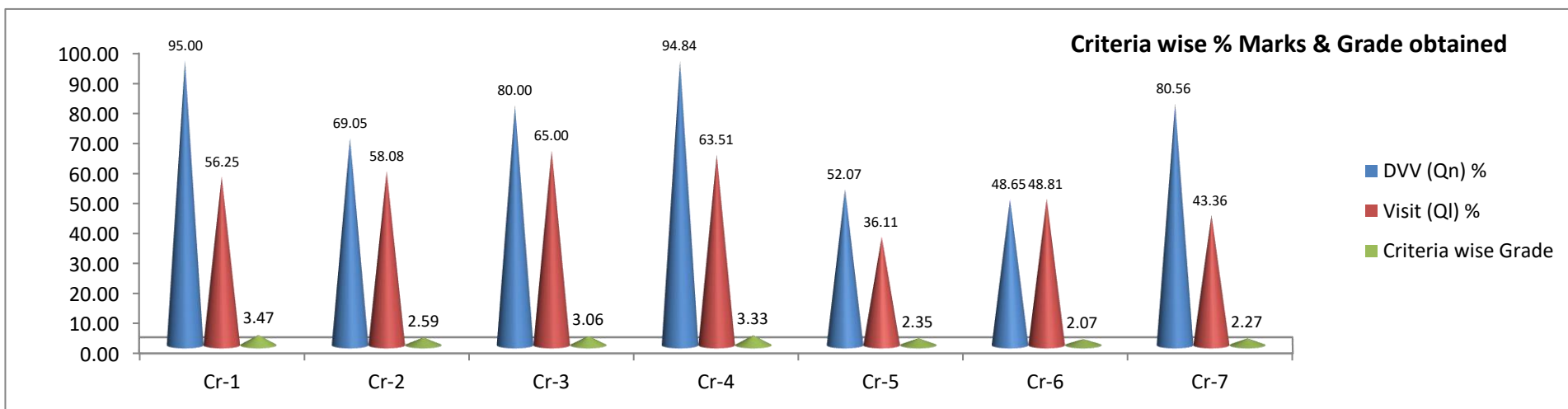
Prof. S. C. Sharma  
Director



## KONKAN GYANPEETH COLLEGE OF ENGINEERING, KARJAT

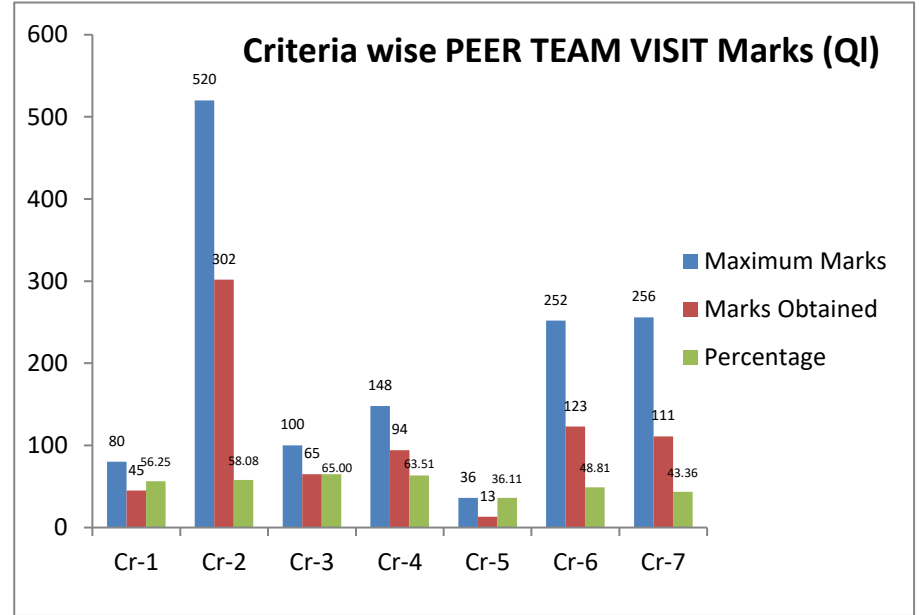
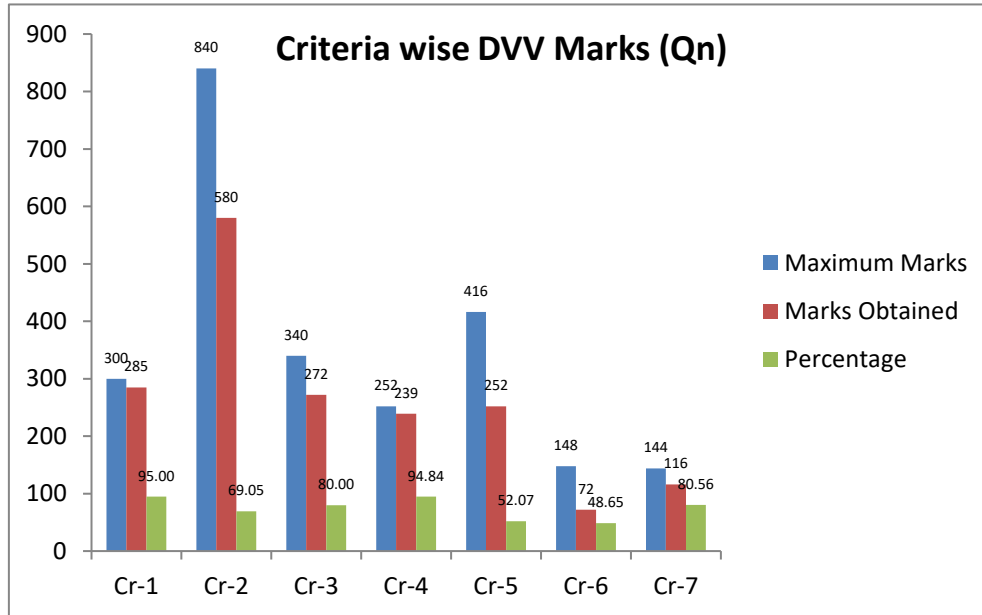
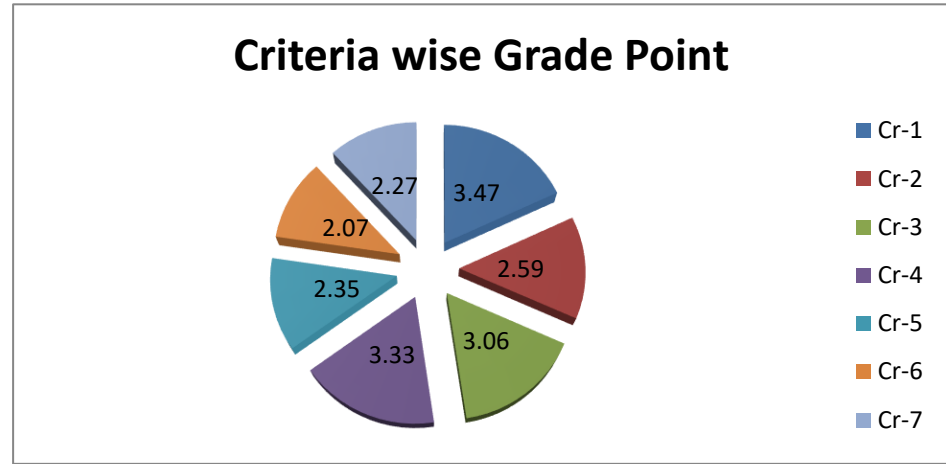
### Details of Marks Obtained

Criteria	Qn	DVV (Qn)*4	%	QI	Visit (QI)*4	%	Total	Criteria wise Grade
Cr-1	80	285/300	95.00	20	45/80	56.25	330/380	3.47
Cr-2	220	580/840	69.05	130	302/520	58.08	882/1360	2.59
Cr-3	95	272/340	80.00	25	65/100	65.00	337/440	3.06
Cr-4	63	239/252	94.84	37	94/148	63.51	333/400	3.33
Cr-5	121	252/416	60.58	9	13/36	36.11	265/452	2.35
Cr-6	37	72/148	48.65	63	123/252	48.81	195/400	2.07
Cr-7	36	116/144	80.56	64	111/256	43.36	227/400	2.27
<b>Total</b>	<b>652</b>	<b>1816/2440</b>	<b>74.43</b>	<b>348</b>	<b>756/1392</b>	<b>54.31</b>	<b>2592/3832</b>	<b>67.64</b>
<b>Actual Marks</b>	<b>Opt Out 42</b>	<b>454</b>			<b>189</b>	<b>Grade={((454+189)*4)/3800}*4=2.70</b>		<b>B+</b>



### Criteria wise Grade Point

Criteria	Total	Criteria wise Grade
Cr-1	330/380	3.47
Cr-2	882/1360	2.59
Cr-3	337/440	3.06
Cr-4	333/400	3.33
Cr-5	265/452	2.35
Cr-6	195/400	2.07
Cr-7	227/400	2.27



Criteria	DVV (Qn) %	Visit (Ql) %	Criteria wise Grade
Cr-1	95.00	56.25	3.47
Cr-2	69.05	58.08	2.59
Cr-3	80.00	65.00	3.06
Cr-4	94.84	63.51	3.33
Cr-5	52.07	36.11	2.35
Cr-6	48.65	48.81	2.07
Cr-7	80.56	43.36	2.27

Criteria wise DVV Marks (Qn)			
Criteria	Maximum Marks	Marks Obtained	Percentage
Cr-1	300	285	95.00
Cr-2	840	580	69.05
Cr-3	340	272	80.00
Cr-4	252	239	94.84
Cr-5	416	252	52.07
Cr-6	148	72	48.65
Cr-7	144	116	80.56

Criteria wise PEER TEAM VISIT Marks (Ql)			
Criteria	Maximum Marks	Marks Obtained	Percentage
Cr-1	80	45	56.25
Cr-2	520	302	58.08
Cr-3	100	65	65.00
Cr-4	148	94	63.51
Cr-5	36	13	36.11
Cr-6	252	123	48.81
Cr-7	256	111	43.36





## KONKAN GYANPEETH COLLEGE OF ENGINEERING, KARJAT

(Approved by A.I.C.T.E., New Delhi and Affiliated to the University of Mumbai)

Konkan Gyanpeeth Shaikshanik Sankul, Vengaon Road, Dahivali, Karjat, Dist.-Raigad.410201. (M.S.)

Tel.:- (02148)222580, 223768 Fax:- (02148)223664, 222359 E-mail:- kgce@vsnl.net Website:- [www.kgce.org](http://www.kgce.org)

Date: 14/03/2018

Following staff members are appointed as committee members for smooth conduction of NAAC work

The list is as follows:-

Criteria	College Co-ordinator
I- Curricular Aspects	Prof.A.G.Nagpure Prof.S.M.Patil
II-Teaching Learning and Evaluation	Dr.A.W.Kale Prof.Mrs.V.A.Keshwani
III Research, Innovations and Extension	Prof.A.S.Kunte Prof.P.R.Bhosale
IV-Infrastructure and Learning Resources	Prof.R.P.Narkhede Prof.G.G.Galgate Prof.J.P.Patil
V-Student Support and Progression	Prof.R.B.Singh Prof.R.M.Parthe
VI- Governance, Leadership and Management	Prof.G.V.Dakhave Prof.P.H.Nerpagar Prof.N.M.Lad
VII- Institutional Values and Best Practices	Dr.M.J.Lengare Prof.R.P.Narkhede Prof.Mrs.D.J.Keskar

**Dr.V.J.Pillewan**

**NAAC Co-ordinator**

**Prof. R.P. Narkhede**

**Vice Principal -Administration**

**Dr.M.J.Lengare**

**Principal, K.G.C.E.,Karjat**